



GIK MATHEMATICS SOCIETY

PRESENTS



ALL PAKISTAN MATHEMATICS
OLYMPIAD

LIAISON
PACKAGE



Dean of Student Affairs
Sir Imran Khan

Advisor GMS
Sir Zahir Iqbal



President GMS
Muhammad Annus

Overview



01

Invitation Letter

02

About **GIKI**

03

About **GMS**

04

APMO Details

05

APMO Modules

06

Social Events

07

APMO Prizes

07

Rules & Regulations

09

Register as a Participant

10

Register as an Ambassador

11

Contact Details

INVITATION LETTER

Respected Sir/Ma'am,

GIK Mathematics Society would like to invite you to the **All-Pakistan Mathematics Olympiad** 2024 cordially. Every year, participants from all over Pakistan showcase expertise in various domains and educational levels and join APMO.

The event is scheduled from **October 18th to 20, 2024 this year**. The 3-day event not only challenges participants with brain-wracking modules but also provides an opportunity for them to enjoy social activities as in the words of Albert Einstein, "education is not the learning of facts but the training of the mind to think."

At GMS, we aim to bring out the extraordinary qualities of our generation through modules testing time management, IQ, and motivational speaker sessions, guiding participants toward an advanced and bright future. Social activities add a relaxing touch.

This liaison package provides a brief overview of what APMO offers to its participants. We would be honored to have you join us on this amazing journey of APMO 2024.

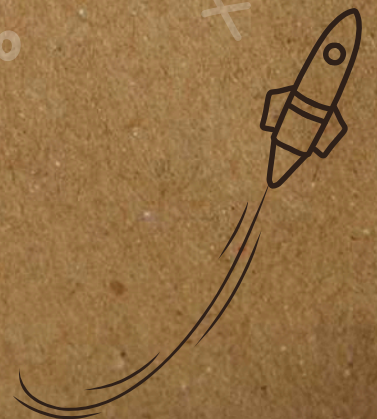


ABOUT GIKI



The Ghulam Ishaq Khan Institute of Engineering Sciences and Technology is a private research university situated in Topi, Khyber Pakhtunkhwa, Pakistan. The institute boasts a sprawling 400-acre (1.6 km²) campus located in the vicinity of Swabi District.

Founded in 1993 by the former President of Pakistan, Ghulam Ishaq Khan, the institute has consistently attracted the nation's most influential scientists, including Abdul Qadeer Khan, Asghar Qadir, and Shaukat Hameed Khan. Their contributions played a pivotal role in establishing GIKI as one of the world's finest science and engineering colleges. GIKI is renowned as a competitive institution with a low acceptance rate, necessitating students to demonstrate extraordinary academic excellence and capabilities, coupled with a strong financial standing, for accommodation.



ABOUT GMS

$\lim_{x \rightarrow 0} f(x)$

The GIK Mathematics Society is the first ever Mathematics Society in a Pakistani Engineering Institute. Its primary objectives are to cultivate enthusiasm for Mathematics among students and inspire their active participation in Mathematical Sciences.

Furthermore, GMS strives to empower students by providing them with the essential skills and foundations for Mathematical modeling and simulations, specifically tailored to address engineering challenges.



APMO

All Pakistan Mathematics Olympiad (APMO) stands out as Pakistan's largest annual mathematical competition, expertly organized by the GIK Mathematics Society. This prestigious event draws participants from diverse educational institutions across Pakistan, spanning various educational levels. It serves as a platform for participants to refine their mathematical skills, encouraging innovative approaches to problem-solving.

The Olympiad goes beyond conventional competition by offering a rich array of engaging modules, including the Mensa IQ test, Mind trap, Chess competition etc. Notably, APMO stands out for hosting interactive sessions with globally renowned mathematicians, providing participants with a unique opportunity to learn from the best minds in the field.

In addition to the intellectual stimulation, APMO contributes to a holistic experience by incorporating social events into its program. These include concerts, hiking expeditions, and themed dinners, creating a well-rounded environment that fosters both academic and social development.

Dates: OCT 18-20, 2024



MODULES

MATHS IN SPACE

What if I told you math could help you travel through time, places, and puzzles? That's exactly what space math does! We'll solve puzzles, plot maps, and uncover the destination—whether it's a place, a picture, or a letter to the past. Math is your key, and the rest is history. How will you unlock the mystery with numbers?



MENSA IQ TEST

GIK Mathematics Society has collaborated with the international organization MENSA to conduct an IQ test based on international standards. This module tests the cognitive skills of the participants through various interactive activities.



MATHS REALITY SHOW

This module challenges participants with an exciting journey across multiple locations, where teamwork and strategy play a key role. The thrill of the race adds an extra layer of excitement, pushing participants to think on their feet.



CHESS

This module is specifically created to expand your mind and test your mental abilities to remain focused during the game. The regular rules of chess are followed, with the exception that the total duration is restricted to 10 minutes.



SURPRISE

The event concludes with an unexpected twist that will test participants in new and thrilling ways. This final challenge is designed to push the boundaries of their skills and knowledge, ensuring an unforgettable end to the competition.



SOCIAL EVENTS

Concert/Qawali

A free, rejuvenating Musical Concert for our participants, offering some real enjoyment to escape from stress, will be set up. Although the vocalist is not yet chosen, the name will be revealed before the event.



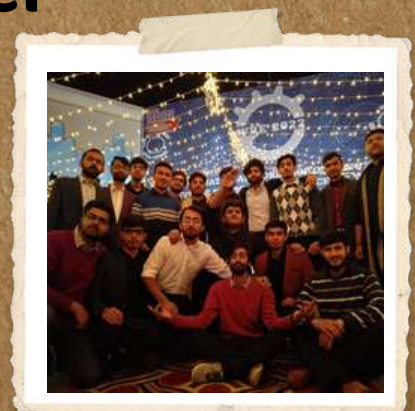
Hiking Trip

GKI is in the province of KPK which is known for its pristine landscape and abundance of natural beauty. You will have the opportunity to see it from the top by joining APMO. GMS will provide its participants the opportunity to climb this year and take in the beautiful splendor of the GKI Institute.



Theme Dinner

There will be a thorough setup for meals at the theme dinner for all participants and ambassadors. The Theme for the Dinner will be decided later and will be communicated to you.





PRIZES



Following is the tentative break-up of the prizes and awards for the winners of the All-Pakistan Mathematics Olympiad 2024:

- The winning team of each module will be awarded the following:
 1. Certificate of Achievement
 2. Winner's Shield.
- Runner-up team of each module will be awarded: Certificate of Achievement
- The team/institute that wins the maximum number of modules or prizes will be awarded :
Best Performance Award
- All the participants will be given a Certificate of Participation.
- The ambassador who brings along the most participants will be awarded:
Best Ambassador Award





RULES & REGULATIONS



- No Refund Policy
- Carrying firearms is strictly prohibited within GIK. Anyone found carrying it will be immediately expelled from the GIK premises.
- Use of drugs and alcohol is strictly prohibited within GIK premises. Anyone found carrying or using these will be disqualified from the event and will be immediately handed over to the law enforcement agencies.
- Any misconduct will lead to immediate disqualification of the team.
- Heavy fines will be imposed for any damage done to the rooms or any property.
- GMS holds the right to cancel or modify any module or social event without prior notice
- During the commencement of the modules ,any decision made by APMO's host team will be final. Anyone challenging it might be disqualified from the event





REGISTER AS A PARTICIPANT

- All participants are required to register individually. However, they will participate as a team consisting of a maximum of 5 members.
- The registration fee of **Rs. 7000/-** per participant must be paid by making a bank draft in place of the following account:
- Early bird discount for those who registered before **7 October is Rs. 5000/-** per participant

Account number or IBAN number	PK 70 HABB 0019 7900 0008 5901
Name on the bank account	G.I.K Institute Topi
Beneficiary Address	G.I.K Institute of Engineering Sciences and Technology Topi
Swift Code	HABB PKK AXXX
Bank name	Habib Bank Limited GIKI Topi
Branch Code	1979

To confirm the registration, a copy of the bank draft stamped by the respective bank should either be:

WhatsApp at: **0306 6990610** or

Mailed to: Room # 95 , Hostel#6, GIKI, Topi, Swabi,
K.P.K





REGISTER AS AN AMBASSADOR

- **Purpose:** The Ambassador Program is designed for non-GMS members seeking active involvement in APMO.
 - **Responsibilities:** Besides physical posters, ambassadors are tasked with publicizing event details on social media and within their social circles to attract students for registration.
 - **Recognition:** Incentives are awarded for ambassadors' dedication, providing invaluable professional experience.
-
- **Liaison Package:** Shortlisted ambassadors will receive a liaison package and event posters to share with interested students.
 - **Primary Task:** Ambassadors play a vital role by displaying posters on their institute's soft boards.
 - **Participant Recruitment:** Ambassadors are expected to recruit a minimum of 10 participants.



PERKS OF BEING AN AMBASSADOR

Ambassadors will be placed in different categories with different incentives based on how many participants they register.

The four categories include:

1. Platinum
2. Diamond
3. Gold
4. Silver

Platinum

Any ambassador who registers at least 20 participants will be categorized in this category.

Incentives:

1. Best Ambassador Shield.
2. VIP treatment at different modules.
3. Registration fee waived off.
4. Official certificate as proof of ambassadorship.



Diamond

Any ambassador who registers at least 15 participants will be categorized in this category.

Incentives:

1. VIP treatment at different modules.
 2. Registration fee waived off.
 3. Official certificate as proof of ambassadorship.
-

Gold

Any ambassador who registers at least 10 participants will be categorized in this category.

Incentives:

1. Registration fee waived off.
 2. Official certificate as proof of ambassadorship.
-

Silver

Any ambassador who registers at least 5 participants will be categorized in this category.

Incentives:

1. Half Registration fee waived off.
2. Official certificate as proof of ambassadorship.



CONTACT US

President, GIK Mathematics Society

Annus Yahya (03345864292)

Vice President, GIK Mathematics Society

Irsa Safwat (03008720330)

Liaison Heads

Mutahhar (0300-0821856)

Hassan Wadood (0341-1178333)

Areasha (0324-3240926)

Postal Address: Room# 95, Hostel#6, GIKI, Topi, Swabi, K.P.K

Email: gikmathematicsociety@gmail.com

Social Media

www.facebook.com/gikmathematicsociety.

www.instagram.com/gikmathematicsociety.